

**ROYAL ICELANDIC LAGOON**

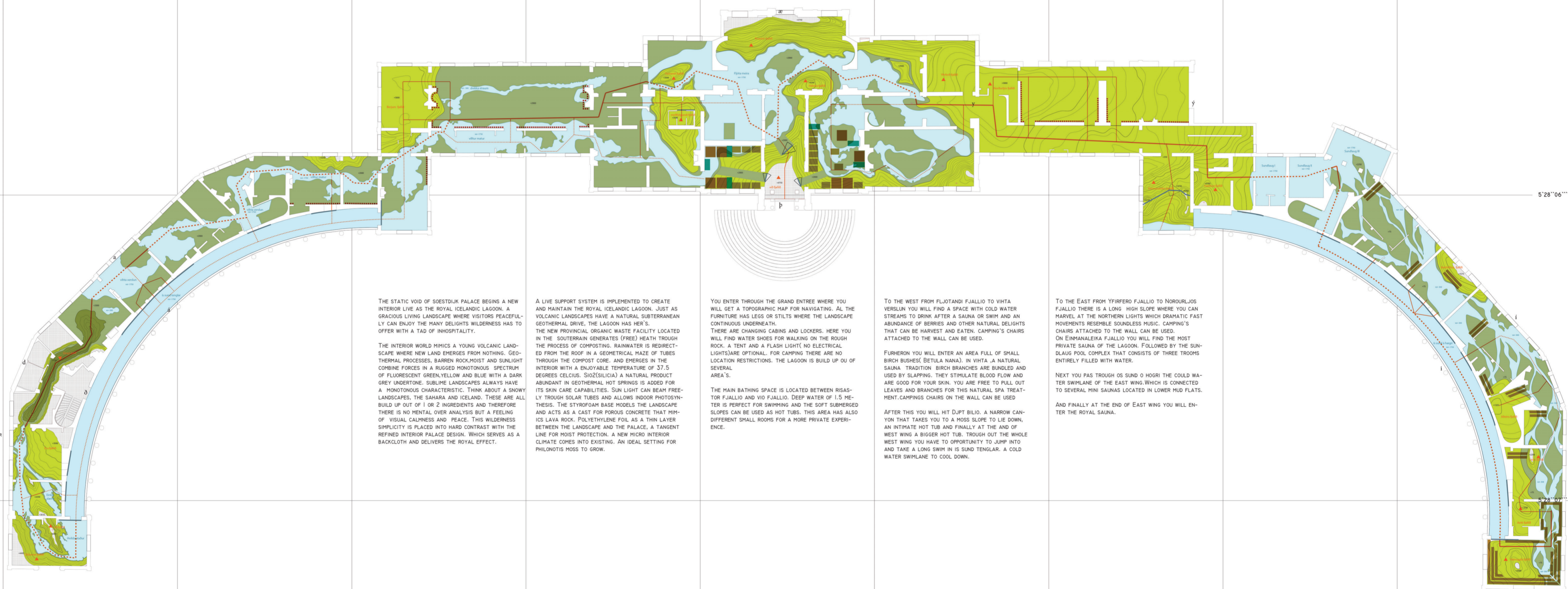
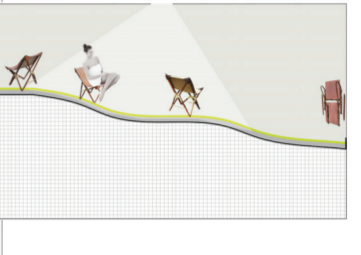
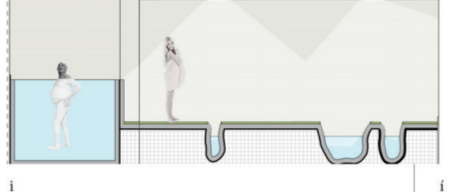
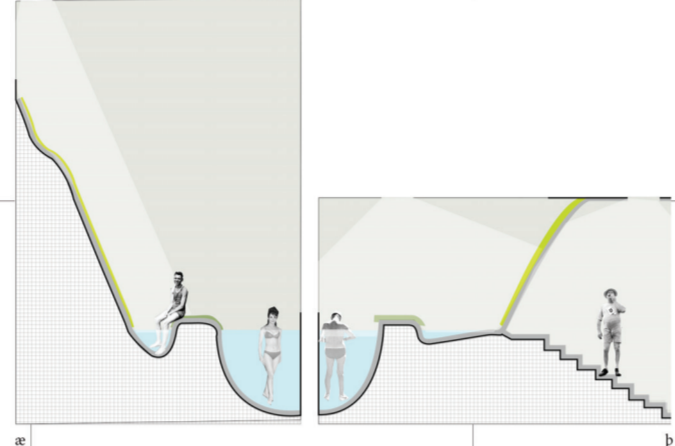
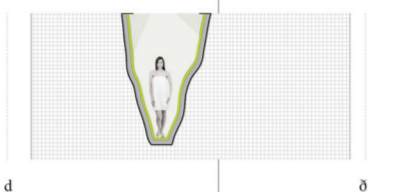
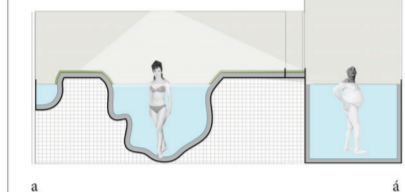
SCALE 1/1000  
0 1 2 3 4 5 6 7 8 9 10 (M)

DIRECTOR : BRUNO VERMEERSCH  
LANDSCAPE ARCHITECT : SPION VERBECK/ACADEMY OF ARCHITECTURE 2016  
WWW.RE-PUBLIC/ROSTOK.NL

**LEGEND**

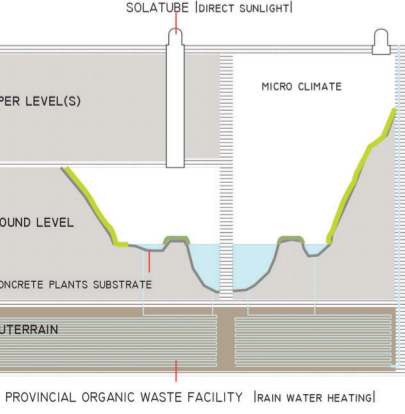
SCALE 1/500 SECTIONS

- COLD WATER
- GEOTHERMAL WATER 37.5 DEGREES CELSIUS RICH IN SILICIA
- STYROFOAM
- PHILONOTIS FONTANA
- PHILONOTIS SERIATA PHILONOTIS FONTANA



- TOILET (CONNECTED WITH COMPOST FACILITY)
- LOCKER (INGE-TENT/WATER SHOES/SLASH LIGHT)
- CHANGING ROOM
- SAUNA BENCH
- CAMPING CHAIR
- MOUNTAIN (HILL)
- CANYON (DIP)
- SLIDING DOOR
- DOOR
- NEW SOESTDUJKS PEIL(NSP) 0+ GROUND/FLOOR +2H
- HEIGHT LEVELS IN REFERENCE TO NSP: +/- NUMBER
- PRIMARY HIKING TRAIL
- PRIMARY SWIMMING TRAIL
- SECONDARY HIKING TRAIL
- SECONDARY SWIMMING TRAIL

**LANDSCAPE LIFE SUPPORT SYSTEM**



THE STATIC VOID OF SOESTDUJK PALACE BEGINS A NEW INTERIOR LIFE AS THE ROYAL ICELANDIC LAGOON. A GRACIOUS LIVING LANDSCAPE WHERE VISITORS PEACEFULLY CAN ENJOY THE MANY DELIGHTS WILDERNESS HAS TO OFFER WITH A TAD OF INHOSPITALITY.

THE INTERIOR WORLD MIMICS A YOUNG VOLCANIC LANDSCAPE WHERE NEW LAND EMERGES FROM NOTHING, GEOTHERMAL PROCESSES, BARREN ROCK, MOIST AND SUNLIGHT COMBINE FORCES IN A RUGGED MONOTONOUS SPECTRUM OF FLOURESCENT GREEN, YELLOW AND BLUE WITH A DARK GREY UNDERTONE. SUBLIME LANDSCAPES ALWAYS HAVE A MONOTONOUS CHARACTERISTIC. THINK ABOUT A SNOWY MOUNTAINS, THE SAHARA AND ICELAND. THESE ARE ALL BUILD UP OUT OF 1 OR 2 INGREDIENTS AND THEREFORE THERE IS NO MENTAL OVER ANALYSIS BUT A FEELING OF VISUAL CALMNESS AND PEACE. THIS WILDERNESS SIMPLICITY IS PLACED INTO HARD CONTRAST WITH THE REFINED INTERIOR PALACE DESIGN. WHICH SERVES AS A BACKCLOTH AND DELIVERS THE ROYAL EFFECT.

A LIVE SUPPORT SYSTEM IS IMPLEMENTED TO CREATE AND MAINTAIN THE ROYAL ICELANDIC LAGOON. JUST AS VOLCANIC LANDSCAPES HAVE A NATURAL SUBTERRANEAN GEOTHERMAL DRIVE, THE LAGOON HAS HER'S.

THE NEW PROVINCIAL ORGANIC WASTE FACILITY LOCATED IN THE SOUTERRAIN GENERATES (FREE) HEATH THROUGH THE PROCESS OF COMPOSTING. RAINWATER IS REDIRECTED FROM THE ROOF IN A GEOMETRICAL MAZE OF TUBES THROUGH THE COMPOST CORE, AND EMERGES IN THE INTERIOR WITH A ENJOYABLE TEMPERATURE OF 37.5 DEGREES CELSIUS. SiO2(SILICIA) A NATURAL PRODUCT ABUNDANT IN GEOTHERMAL HOT SPRINGS IS ADDED FOR ITS SKIN CARE CAPABILITIES. SUN LIGHT CAN BEAM FREELY THROUGH SOLAR TUBES AND ALLOWS INDOOR PHOTOSYNTHESIS. THE STYROFOAM BASE MODELS THE LANDSCAPE AND ACTS AS A CAST FOR POROUS CONCRETE THAT MIMICS LAVA ROCK. POLYETHYLENE FOIL AS A THIN LAYER BETWEEN THE LANDSCAPE AND THE PALACE, A TANGENT LINE FOR MOIST PROTECTION. A NEW MICRO INTERIOR CLIMATE COMES INTO EXISTING. AN IDEAL SETTING FOR PHILONOTIS MOSS TO GROW.

YOU ENTER THROUGH THE GRAND ENTREE WHERE YOU WILL GET A TOPOGRAPHIC MAP FOR NAVIGATING. AL THE FURNITURE HAS LEGS OR STILTS WHERE THE LANDSCAPE CONTINUOUS UNDERNEATH.

THERE ARE CHANGING CABINS AND LOCKERS. HERE YOU WILL FIND WATER SHOES FOR WALKING ON THE ROUGH ROCK. A TENT AND A FLASH LIGHT( NO ELECTRICAL LIGHTS) ARE OPTIONAL. FOR CAMPING THERE ARE NO LOCATION RESTRICTIONS. THE LAGOON IS BUILD UP ON OF SEVERAL AREA'S.

THE MAIN BATHING SPACE IS LOCATED BETWEEN RISAS-TOR FJALLIO AND VIO FJALLIO. DEEP WATER OF 1.5 METER IS PERFECT FOR SWIMMING AND THE SOFT SUBMERGED SLOPES CAN BE USED AS HOT TUBS. THIS AREA HAS ALSO DIFFERENT SMALL ROOMS FOR A MORE PRIVATE EXPERIENCE.

TO THE WEST FROM FLJOTANDI FJALLIO TO VIHTA VERSLIYU YOU WILL FIND A SPACE WITH COLD WATER STREAMS TO DRINK AFTER A SAUNA OR SWIM AND AN ABUNDANCE OF BERRIES AND OTHER NATURAL DELIGHTS THAT CAN BE HARVEST AND EATEN. CAMPING'S CHAIRS ATTACHED TO THE WALL CAN BE USED.

FURHERON YOU WILL ENTER AN AREA FULL OF SMALL BIRCH BUSHES( BETULA NANA). IN VIHTA A NATURAL SAUNA. TRADITION BIRCH BRANCHES ARE BUNDLED AND USED BY SLAPPING. THEY STIMULATE BLOOD FLOW AND ARE GOOD FOR YOUR SKIN. YOU ARE FREE TO PULL OUT LEAVES AND BRANCHES FOR THIS NATURAL SPA TREATMENT. CAMPING'S CHAIRS ON THE WALL CAN BE USED

AFTER THIS YOU WILL HIT DUPT BILIO. A NARROW CANYON THAT TAKES YOU TO A MOSS SLOPE TO LIE DOWN. AN INTIMATE HOT TUB AND FINALLY AT THE END OF WEST WING A BIGGER HOT TUB. THROUGH OUT THE WHOLE WEST WING YOU HAVE TO OPPORTUNITY TO JUMP INTO AND TAKE A LONG SWIM IN IS SUND TENGILAR. A COLD WATER SWIMLANE TO COOL DOWN.

TO THE EAST FROM YFIRFERO FJALLIO TO NOROURLJOS FJALLIO THERE IS A LONG HIGH SLOPE WHERE YOU CAN MARVEL AT THE NORTHERN LIGHTS WHICH DRAMATIC FAST MOVEMENTS RESEMBLE SOUNDLESS MUSIC. CAMPING'S CHAIRS ATTACHED TO THE WALL CAN BE USED.

ON ENHMANALEIRA FJALLIO YOU WILL FIND THE MOST PRIVATE SAUNA OF THE LAGOON. FOLLOWED BY THE SUNDLAUG POOL COMPLEX THAT CONSISTS OF THREE TROOMS ENTIRELY FILLED WITH WATER.

NEXT YOU PAS TROUGH OS SUND O HOGRI THE COLD WATER SWIMLANE OF THE EAST WING WHICH IS CONNECTED TO SEVERAL MINI SAUNAS LOCATED IN LOWER MUD FLATS.

AND FINALLY AT THE END OF EAST WING YOU WILL ENTER THE ROYAL SAUNA.

